



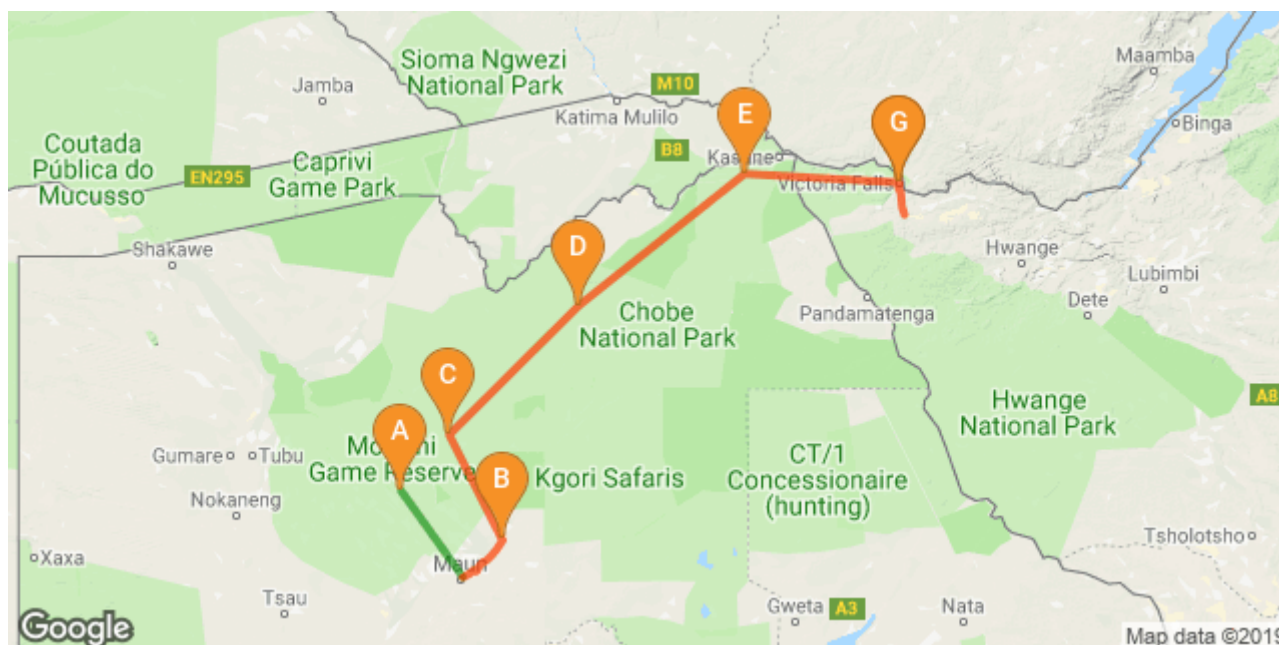
SAFARI SPECIALISTS



BOTSWANA IS OUR HOME SAFARIS ARE OUR PASSION

11nts Rhino Lodge & Mobile_2020

Okavango Delta - Maun - Moremi Game Reserve - Savuti (Chobe National Park) - Chobe National Park -
Victoria Falls, Zimbabwe
12 Days / 11 Nights
Start Maun / End Victoria Falls



[Click here to view your Digital Itinerary](#)

Introduction

Start	Accommodation	Destination	Basis	Duration
Day 1	Oddballs' Camp	Okavango Delta	FB+	2 Nights
Day 3	Bush Ways Rhino Mobile Safari Maun Outskirts	Maun	FB+	1 Night
Day 4	Bush Ways Rhino Mobile Safari Moremi	Moremi Game Reserve	FB+	3 Nights
Day 7	Bush Ways Rhino Mobile Safari Savute	Savuti - Chobe National Park	FB+	1 Night
Day 8	Bush Ways Rhino Mobile Safari Chobe	Chobe National Park	FB+	2 Nights
Day 10-11	Nguni Lodge (or Pioneers/similar)	Victoria Falls, Zimbabwe	B&B	2 Nights

Key

B&B: Bed and Breakfast. FB+: Full Board Plus - Dinner, Bed, Breakfast, Lunch and Activities

Transport

Flight Information

Date	Flight	Details
Day 1	Delta Air	Maun Airport [MUB] - Delta Airstrip
Day 3	Delta Air	Delta Airstrip - Maun Airport [MUB]

Transfers

Date	Company	Details
Day 12	Wild Horizons	Nguni Lodge - Victoria Falls International Airport [VFA]

Season	Cost per person	Single Supplement	Departure Dates
Jan - March 2020	EUR 2410	EUR 180	08 - 19 January; 29 January - 09 February; 19 February- 01 March; 11 - 22 March; 25 March - 05 April
April - June 2020	EUR 2560	EUR 180	08 - 19 April; 22 April - 03 May; 06 - 17 May; 20 - 31 May; 10 - 21 June; 24 June - 05 July
July - 25 October 2020	EUR 2810	EUR 450	08 - 19 July; 22 July - 02 Aug; 05 - 16 August; 19 - 30 August; 02 - 13 September; 16 - 27 September; 30 September - 11 October; 14 - 25 October
Split Season 28 Oct - 08 November 2020	EUR 2730	EUR 440	28 October - 08 November
November 2020	EUR 2560	EUR 180	11 - 22 November; 25 November - 06 December
December 2020	EUR 2470	EUR 180	16 - 27 December

Special notes

- This itinerary is based on the 8 night Rhino Camping Safari, departure dates work around this safari. There are additional dates available on the 7 night Buffalo Camping Safari, with a night in Maun between Oddballs Camp and starting the Bush Ways camping safari.
- Split season pricing refers to an individual departure that crosses between two seasons so requires own pricing
- The Single surcharge applies to those requiring single accommodation throughout the safari, any SOLO travelers may incur additional transfer costs, depending on the group logistics, please discuss with your consultant. Should you be single and happy to share with same sex guest on the camping safari, the single surcharge reduces by 130 EUR.
- Optional upgrades in Victoria Falls accommodation on request. Please note that your first night at Nguni Lodge (or Pioneers/or similar) is part of the group safari with Bush Ways Safaris in a standard room and the second night is on your own.
- The above rate is subject to change due to major currency fluctuations and fuel surcharges
- Rates subject to National Park Fee increase

Family Friendly

Children 12 years and over are welcome, for younger children we recommend a private mobile safari, discuss options with your consultant.

Park Fees and Departure Taxes and Tourism Levy

Please be aware that Park Fees, Conservation Levies, VAT, Airport Taxes and Government Levies may increase in 2020. Regrettably such increases are beyond our control and are excluded from any bookings, provisional or confirmed. We will inform you should any increase be advised.



Travel for Impact – Responsible Travel

By booking this itinerary, you donate USD\$2 for every night of travel per person on the booking. Your donation goes to Travel for Impact (TFI) and ensures that your safari has a meaningful impact on the people who live locally. For more information on giving back to your chosen destination of travel, visit www.travelforimpact.com



Feed a Child Botswana

Safari Specialists contribute USD\$5 per person per booking to Feed A Child Botswana. This contribution goes directly towards the purchase of Nutri-meal, a fortified cereal provided to undernourished children in our local community in Maun.



Okavango Air Rescue

Please note that we include Okavango Air Rescue patronage. They provide paramedic or Doctor assisted helicopter medical evacuation as required, in conjunction with your travel insurance. Please discuss further details with your consultant and visit www.okavangorescue.com

Day 1-3: Oddballs' Camp, Okavango Delta

On arrival at Maun Airport you are met by a Safaris Specialist representative who will assist you with your onward light aircraft connection to Oddballs' Camp for your 2 night stay on a full board and activities basis.



The Okavango Delta is where the wild things are: an immense, waterlogged oasis alive with elephants and birdlife, adrift in the middle of Kalahari sands. The real magic of the Delta lies in its water, trickling through from far away highlands, and spreading across the channels and floodplains.

During winter in the Kalahari, when the sun has baked the earth bare and turned the desert its driest, water fills the Okavango; transforming the floodplains into a Noah's Ark of African wildlife.

As the water brings life to the delta, its local residents shape and recreate it. Termites slowly build mounds into islands, germinated with palm trees by passing elephants. Waterways open and close on the whim of wide-bottomed hippos, carving out channels where they crash through reeds, and leaving room behind them for exploration by mokoro.

The Okavango has many faces, which change throughout the year, prompted by that most unpredictable diva of all: the weather. Water levels rise and drop, expanding and shrinking islands, while animals move where the life is easiest and the grass greenest. In a few days, a sandy road driven by vehicle can become a waterway of unknowable depth, prompting a safari by boat instead.

Where and when you stay in the Okavango Delta will hugely influence what you do in the bush each day, the animals you're most likely to see and finally, the safari experience you'll have.

The delta's watery heart is best discovered by mokoro through shallow channels and floodplains, as well as crossing the islands on foot. For less water and more of the big game, visit a camp on its drier edges (including Moremi Game Reserve and the Khwai Community Area), jump on a vehicle and seek out the animals hiding in the woodlands.

Overnight: Oddballs' Camp [View iBrochure](#)

Includes: meals, activities, laundry and park fees

Excludes: all drinks - Please note that these will need to be paid for in cash as there are no credit card facilities

Activities: bush walks and mokoro excursions (depending on water levels)

Situated in the south-western Okavango Delta, Oddballs Camp is one of the original camping sites in the Okavango Delta. The camp is accessible by a 25-minute light aircraft flight from Maun. Oddballs' camp is an affordable delta experience that suits the adventurous traveller or those just wishing to get away from it all.

Oddballs Camp accommodation consists of large walk-in tents erected on raised wooden platforms, overlooking the floodplains and bush. All tents have rustic, en-suite bathrooms with canvas walls, open air with bucket showers flush toilets.

The central dining area directly overlooks the Boro River, providing excellent game viewing for guests. There is also a comfortable lounging area and a raised viewing platform with plenty of private and communal areas to relax and enjoy this beautiful area - barefoot, relaxed and informal.

Days are spent in a relaxing manner with guests exploring the area by foot and mokoro - the traditional dug-out canoe. These excursions are conducted along the Boro River, one of the main channels of the Okavango Delta, and surrounding floodplains – water levels varying with the time of year. You enjoy guided walks on Chief's Island in the beautiful Moremi Game Reserve, with a local professional guide who has grown up in the area and has an expert knowledge of the flora, fauna and culture of the delta region. The atmosphere is tranquil and undisturbed by engines thus offering a pure experience of the wilderness.

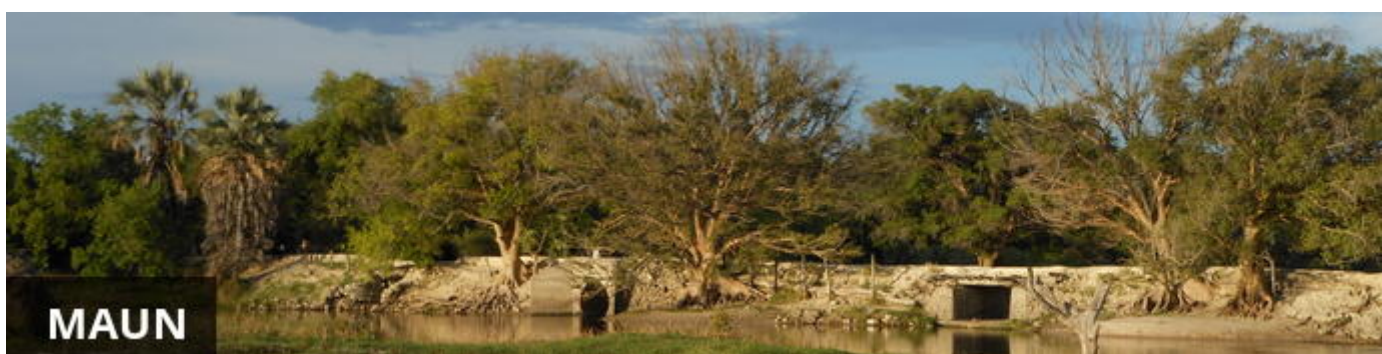
An exciting further option from Oddballs Camp is to camp 'wild' out in the delta on a mokoro trail (pre-bookings required and water level dependent) accompanied by your poler/guide. There is a provisions' and camping equipment store at Oddballs and when you undertake a mokoro camping trail your food will be provided but you will be responsible for its preparation.

Airstrip Transfer Time: 5 minutes



Day 3: Bush Ways Rhino Mobile Safari, Maun Outskirts

After breakfast and a morning activity, you will fly back to Maun where you are met by a representative from Bush Ways Safaris and Safari Specialists. The Bush Ways representative will take you shopping for drinks, if not pre-purchased, and you continue out to Mochaba Crossing (or similar) where you set up camp for the first night.



MAUN

Situated along the banks of the Thamalakane River, in the North-West District of Botswana, Maun, a term that derives its name from the San language, meaning "the place of reeds," serves as the administrative town centre of Ngamiland. Maun is notoriously known as a "Frontier" town, and is referred to as the 'gateway' to the Okavango Delta and Moremi Game Reserve as most tourists enter these destinations through this buzzing town.

Although classified as one of the fastest growing towns in Botswana, and boasting one of the busiest airports in Southern Africa, Maun still retains much of its old/traditional (village-like) character, which encompasses the old judicial court of chiefs who are still active. Reed and mud hut infrastructures are seen in and around town as well as donkeys/carts and livestock. However, numerous hotels, lodges, bed and breakfasts, shopping malls, post offices, a museum and a big hospital are available too. Maun also serves as the headquarters for the safari industry, tour operators and air charter companies that offer trips into the Okavango Delta and National Parks such as Moremi Game Reserve, Khwai, Savute, Makgadikgadi, Chobe, Nxai Pan to name a few, as well as monumental historical sites like the Tsodilo Hills. Opportunities to visit nearby cultural villages can also be arranged from this central point.

Overnight: Bush Ways Rhino Mobile Safari Maun Outskirts (Mochaba Crossing or similar)

Includes: meals, activities, park fees

Excludes: beverages (alcohol, soft drinks and bottled mineral water) personal spending, travel insurance, sleeping bag and pillow

Arriving at the Mochaba Crossing campsite, you will meet your guide and the rest of the group. If time permits you will have the opportunity to do a village walk in the village of Shorobe, renowned for its talented basket weavers and palm wine makers of which you will explore. Please note this activity is only possible to do if you

have not done a scenic flight, due to time restrictions.
 Your first night will be spent in a campsite with shared ablutions. (D)
 Maun – campsite on the outskirts of Maun: 30km, 1.5h



Day 4-7: Bush Ways Rhino Mobile Safari Moremi / Khwai

Today you drive from Mochaba Crossing through to Moremi Game Reserve, one of the best wilderness areas of Botswana which covers swamp and dry areas. During a short break en-route, your guide will give you a full overview of your safari. The next three days will be spent searching for the wide variety of wildlife and birds that this area is renowned for while absorbing the sounds and beauty of this region. Game drives in the early morning as the sun rises and in the late afternoon as the sun sets will be the norm. After your morning game drives, you will return to camp for lunch and a siesta. On the third camping day you will move campsites, most likely to Khwai, to explore a different area of this diverse park. Camping will be in private designated campsites with bush ablutions. (B, L, D)



The Moremi Game Reserve is all about searching for big game; where the habitats are as diverse as the wildlife itself. Water-adapted antelopes and wary-eyed buffaloes spill out into floodplains, behind towering woodlands where leopards hide on the high branches. Dead trees cast silhouettes over elephant-filled savannas a stone's throw from papyrus-fringed channels stretching out to the delta beyond.

When you arrive in the Moremi Game Reserve, it's anyone's guess what you'll find lurking in the long grass. From wild dogs stalking waterbucks to long sunsets by a hippo-filled lagoon, the scenes will live on in memory long after the journey home.

Kick up sharp smelling clouds of dust on a morning drive, disturbing pockets of warm air in the reeds as you splash through water crossings in pursuit of a distant lion's call. Pause by the edge of large lagoons, squinting to catch mischief making hyenas as they emerge from the trees to drink.

When you get sick of game drives, discover the channels by boat while Squacco herons fly alongside you into the wind. Watch a lazy sunset with the blue-cheeked bee eaters before returning to dry land for more hard-core bush exploration.

As Moremi Game Reserve is bound by national park rules, activities here are limited to game drives during hours of daylight with no off-roading, and boat cruises on the permanent channels.

While most of the reserve is open to the public, two private lodges sit in the Mombo Concession to the north of Chief's Island, surrounded by the waters of the Okavango Delta. Boating isn't possible here, instead the area offers the ultimate in dry-land game viewing. Hailed as Botswana's predator capital, this exclusive corner is closed to outsiders and home to the big five, where the invitee list fills up years in advance.

Overnight: Bush Ways Rhino Mobile Safari Moremi and Khwai

Includes: meals, activities, park fees

Excludes: beverages (alcohol, soft drinks and bottled mineral water) personal spending, travel insurance, sleeping bag and pillow

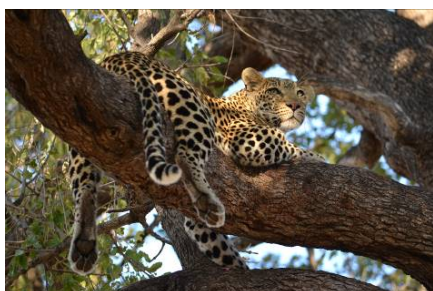
Activities: game drives in Moremi Game Reserve

Your private camp is set up in a wilderness campsite in Moremi while you enjoy the sights and sounds of Botswana's prime game viewing area. The bird and animal life in Moremi is exceptional and diverse making the reserve one of the most unforgettable wildlife experiences in Africa. You will soon slip into the rhythm of tracking wildlife in the varying habitats of swampland, open plains and riverine forest.

The camp consists of a main area with campfire and mess tent. Your accommodation is in 2.1m x 2.1m dome tents. A 5cm high density foam mattress is provided for each guest.

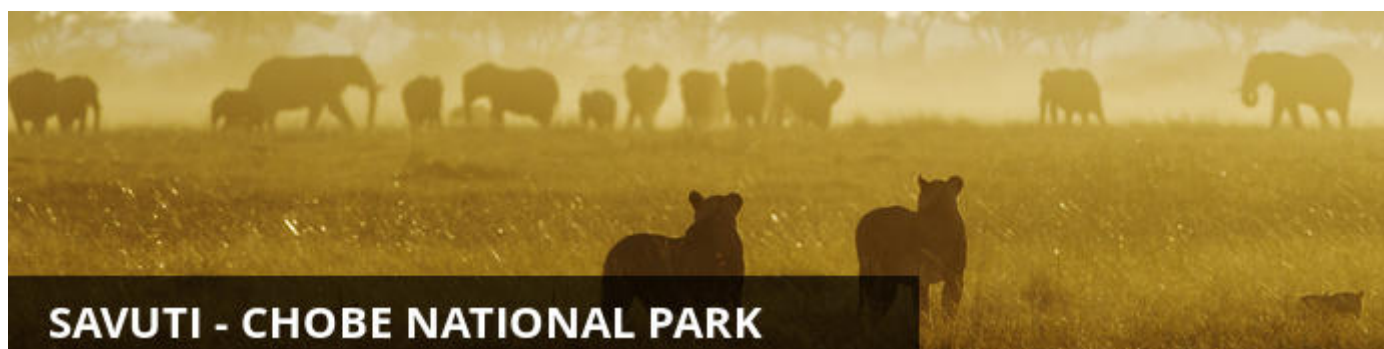
Game drives in the early morning as the sun rises and in the late afternoon as the sun sets will be the norm. After your morning game drives, you will return to camp for lunch and a siesta.

Moremi Game reserve has a vast network of game drive routes and no two game drives are the same. However, it is important to note that whilst camping in the National Parks you will need to return to camp by sunset to conform to the regulations and no off road driving is permitted.



Day 7: Bush Ways Rhino Mobile Safari Savute, Savuti - Chobe National Park

Chobe National Park, with its diverse and striking landscapes, will be your next destination. As you continue your search for wildlife, you will traverse the drier region of Savuti where bull elephants dot the plains. Your overnight in Savute will be in a private designated campsite with bush ablutions. (B, L, D)



When it comes to Botswana, Savute breaks all the rules: both for animal behaviour and for habitats. Here, lions hunt elephants, leopards take to fishing, the grasslands are vast and open and rocky hills punctuate the flat terrain.

Savute has proved itself somewhat of an enigma over the decades. During years of abundance its marsh fills with water, fed by the Savute Channel. The water weaves its way here from Angola via a chain of rivers and lagoons, spilling out into the marsh and drawing huge herds of elephants, wildebeest, zebras and buffalos.

In drier years, the channel shrinks into small pools and can evaporate completely, leaving the marsh dry and sending wildlife to the waterholes for water, where the tension between plains game and predators heats up over a parched and dusty landscape.

Wherever the plains game goes in Savute, the predators follow close-by, learning tricks of survival to adapt to the marsh's ever changing nature. Whether the water flows here or not is anyone's guess. The channel and marsh have a life of their own, independent both of the seasons and the annual rainfall.

Savute doesn't just offer a safari; it's also a feast for the eyes. Whitewashed skeletal trees set against green grass and huge blue skies, blinding red sunsets that spill purple and orange across the bush, and endless horizons that fade into a hazy mirage with the heat.

As Savute is part of Chobe National Park, a safari here is limited to game drives only. With the diversity of habitats, wildlife and landscapes that the marsh has to offer however, you'll still find yourself wishing you had more time to see it all.

Overnight: Bush Ways Rhino Mobile Safari Savute /Zwei Zwei

Includes: meals, activities, park fees

Excludes: beverages (alcohol, soft drinks and bottled mineral water) personal spending, travel insurance, sleeping bag and pillow

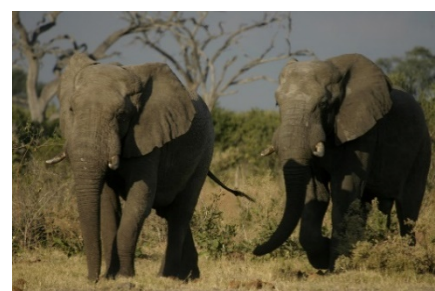
Activities: game drives in Savute area of Chobe National Park

In the heart of Chobe National Park, Savute boasts most of the Chobe species, except for water-loving antelope. It is best known for its predators, particularly lion, cheetah and hyena, of which there are large resident populations.

One of its greatest mysteries is the Savute channel, which has over generations inexplicably dried up and recommenced its flow several times. In flood or not, Savute remains an exceptional wildlife viewing destination.

The camp consists of a main area with campfire and mess tent. Your accommodation is in 2.1m x 2.1m dome tents. A 5cm high density foam mattress is provided for each guest.

The Savute Marsh and surrounding area provides numerous opportunities for game drives. It is important to note that whilst camping in the National Parks you will need to return to camp by sunset to conform to the regulations and no off road driving is permitted.



Day 8-10: Bushways Rhino Mobile Safari Chobe, Chobe National Park

Today you head north towards the Chobe River where your game drives will meander along the banks of the river, followed by the call of the majestic African Fish Eagle. You will spend the following day on game drives to explore Northern Chobe National Park. Camping 2 nights in the Chobe River area in private designated areas with bush ablutions. (B, L, D)



The Chobe River Front is a remarkable wildlife area due to the permanent water source of the Chobe River. However its accessibility from Kasane and neighbouring towns of Victoria Falls and Livingstone has created quite a busy tourist area with larger hotels and lodges than you find in the more remote Okavango Delta. The spectacle of all the animals coming to drink and frolic at the water's edge is one to behold, particularly in the dry season (May - Oct) where water is scarce away from the river. It is an area famous for its abundance of elephants, a variety of predators and, in addition, you are likely to see herds of buffalo and possibly even roan and sable antelope. In the rainy season (Nov - Apr) the game is much less concentrated at the river as the wildlife spread throughout the greater area of Chobe National Park due to availability of surface water from nearby pans. This assists the vegetation on the river banks in recovering from the massive herds that are attracted to the area in the dry months. The summer rains bring beautiful wild flowers, exquisite scenery, impressive bird life and an abundance of young animals usually born around November/December. The spectacular Chobe sunsets alone are worth a visit to the area. Please note that activities are restricted within the national park in accordance with government rules and regulations: these include no driving off-road, no walking and no driving after dark.

Chobe Game Lodge is the only lodge situated within the National Park. The remainder of the lodges, hotels and guesthouses in the Chobe area are located along the river in the town of Kasane, adjacent to the park. In addition there are some lodges situated further out of Kasane and in the Chobe Forestry Reserve, namely Muchenje Safari Lodge and Elephant Valley Lodge for those looking for something in more of a bush setting.

Overnight: Bushways Rhino Mobile Safari Chobe

Includes: meals, activities, park fees

Excludes: beverages (alcohol, soft drinks and bottled mineral water) personal spending, travel insurance, sleeping bag and pillow

Activities: game drives along the Chobe River area of Chobe National Park

The Chobe Riverfront is a mecca for wildlife and is renowned for the greatest populations of African Elephant in the world. The teak forests and riverine vegetation are home to most of the major predators as well a multitude of mammals, reptiles and insects. Found in the far north of the 11,000km² Chobe National Park, the Chobe Riverfront is also home to over 400 species of birds.

The camp consists of a main area with campfire and mess tent. Your accommodation is in 2.1m x 2.1m dome tents. A 5cm high density foam mattress is provided for each guest.

The Chobe National Park provides numerous opportunities for game drives. It is important to note that whilst camping in the National Parks you will need to return to camp by sunset to conform to the regulations and no off road driving is permitted.



Day 10 – 12: Nguni Lodge (or Pioneers/Similar), Victoria Falls, Zimbabwe

After a short morning game drive you will and then drive to the Zimbabwe side of Victoria Falls (Visa required), where you will spend two nights at Nguni Lodge (or similar). The first night is with the group and in the afternoon there will be time to visit the thunderous Victoria Falls and shop for curios.

The guide and group safari ends on Day 11 after breakfast, you then have a full day in Victoria Falls to enjoy additional activities, your time is flexible and the guide can assist you with activity arrangements the day prior.

Dinner will be at your own expense at the lodge. (B, L on Day 10 and B only on Day 11)



At Victoria Falls, the earth splits open and swallows one of Africa's greatest rivers, the mighty Zambezi, creating the largest sheet of falling water on earth. As the water hits the narrow depths of the Batoka Gorge beneath, it blasts a cloud of mist skywards, lending the falls their local name 'mosi-oa-tunya' (the smoke that thunders). When the Zambezi is its fullest, the mist hangs a permanent raincloud above the falls, showering visitors on even the sunniest of days and visible for miles around.

Above the falls on the upper Zambezi, boats cruise the tranquil water at sunset while the distant spray catches the fading light downstream. Below the falls, the Batoka Gorge's rocky walls funnel the lower Zambezi into a chain of world-class rapids, prime for white water rafting.

Aside from being a UNESCO world heritage site and a natural world wonder, Victoria Falls also forms a natural border between Zimbabwe and Zambia. The falls can be seen from both countries, and for the most part the same activities are offered on both sides, from helicopter scenic flights to village visits and souvenir shopping.

Whether your idea of getting away from it all is a relaxed high tea in colonial grandeur or a heart-stopping bungee jump off a bridge, Victoria Falls keeps both the faint of heart and the most insatiable of adrenalin junkies busy for days.

From Zambia, a side on view of the falls is on offer with views into the Batoka Gorge, as well as the possibility of perching yourself at the edge of the falls on the vertigo-inducing Livingstone Island. From Zimbabwe, you'll

get a full-frontal view of three quarters of the falls' 1.7km wide curtain of water from viewpoints and footpaths meandering through a rainforest kept hot and humid by the spray of the falls.

Overnight: Nguni Lodge

Includes: bed and breakfast

Excludes: additional meals, beverages, activities and personal spending

Activities: available at an additional cost

Nguni Lodge is well situated on the outskirts of Victoria Falls and is only 3.2 kms from town. Nguni provides a comfortable, yet affordable, boutique accommodation in secluded surroundings.

The lodge has 14 rooms, 6 of which are deluxe pool view rooms, 7 are Standard garden view rooms and there is 1 Family room which also overlooks the garden.

The lodge has a guest only restaurant, the Kraal, in which breakfast, lunch and dinner is served on a daily basis. Breakfast is included in the rates and with notice guests can book for the set dinner menu.

Staff can assist you in booking any activities and Nguni Lodge provides transfers to and from the Victoria Falls airport on request.



Day 12: End of Itinerary

After breakfast and a morning at leisure, you are transferred to Victoria Falls Airport in time for onward arrangements. (B only)

Travel Information

- Please take note of our Booking Terms & Conditions. It will be understood that these have been read and accepted by you on receipt of confirmation of the booking.
- For your safety and peace of mind, on confirmation of your booking, we strongly recommend that Travel Insurance is arranged to cover cancellation, curtailment, emergency evacuation, medical and repatriation expenses, damage/theft/loss of personal luggage, money and goods.
- Road and air transfers and activities are quoted on a seat basis (shared) unless otherwise requested or specified. Passengers may have various stops en-route to a destination. The transfer or charter company reserves the right to specify departure and arrival times. Private charters can be requested at an additional cost.
- Passengers weighing over 100kg should please advise us at the time of booking, as we may need to cost in an additional seat on internal flights for your safety and comfort.
- The costs are subject to change at any time due to fluctuations in fuel costs, taxes, levies, government regulations, rate of exchange and factors that are imposed upon us by our suppliers that are beyond our control.
- Please advise us of the ages of children (under 18) travelling, together with their date of birth, at the time of

booking as not all lodges accept children and there may be restrictions or conditions which can affect pricing.

- We recommend that optional activities be booked in advance at time of confirmation to guarantee availability e.g. Helicopter Flight of the Angels in Victoria Falls
- Please allow a minimum 2-3 hours connection time in Johannesburg for international flights. It is important that you check that your flight tickets have been issued in your full names as per your passport.
- We require full payment for international and domestic scheduled flights at the time of confirmation e.g. Air Botswana Johannesburg to Maun, Proflight Livingstone - Lusaka and so on. We are not able to guarantee any flights before receipt of payment as seats are often held for a limited period before ticketing is required so this is a time sensitive issue. Air tickets are considered non-refundable unless otherwise specified. Please confirm the details with your consultant at the time of booking.

Passports, Visas and Travel Documentation

Your passport must have at least 6 months validity before the expiry date and 6 empty pages (not including the endorsement pages). The onus is upon guests to ensure that passports and visas are valid for the countries visited. Please note that certain visas can take up to 3 months to be processed so please consider this when booking.

If you are travelling with children through Southern Africa please be aware that you will be required to have certified copies of their unabridged birth certificates, and passports on hand. If you are not their legal parents, or if only one of you is travelling – you will need to have consent in the form of an affidavit giving you permission to travel with the child.

Inter-camp transfers

Due to the vast distances involved in travelling in the remote areas of Southern Africa - your itinerary may include road, boat and air transfers in small aircraft.

On shared air transfers, all the flight times between lodges are arranged a few days before the flights take place to avoid endless schedule changes. The lodge or camp where you are staying will be advised of your departure time the day before travel and will ensure that you are at the airstrip on time. Although every effort will be made to ensure that guests are transferred together in one vehicle / aircraft, this cannot be guaranteed, especially with larger groups. The aircraft used for inter-camp transfers vary in size from 3, 5, 7 and 12 seater aircraft. We recommend that guests susceptible to motion sickness take appropriate precautions due to flying conditions.

Weight & Luggage Restrictions

There are strict luggage restrictions in place on any itinerary, which includes light aircraft transfers for safety reasons. Luggage, including camera equipment and hand luggage, is restricted to 20 kg per person travelling on seat rates. Only soft bags will be accepted - no hard suitcases or bags with wheels can be transported, as they physically cannot fit into the aircraft.

The maximum dimensions of the soft bags that can be accommodated are as follows: 25cm/10 inches wide x 30cm/11 inches high and 62cm/24 inches long. Please keep in mind that the baggage compartments on the light aircraft are only 25cm high, so the pilots must have the ability to manipulate the bag into the compartment. Note that laundry can be done on a daily basis at most camps and lodges.

Should you arrive with excess baggage without prior warning, your baggage could be delayed, as we may have to fly the baggage into camp at a later stage at considerable extra cost to you. However, should you notify us in advance that your baggage will exceed the limit; we may be able to assist you with alternative arrangements e.g. storage or purchase of additional luggage allowance.

For bookings including flights within Zambia & Mozambique, please note luggage weight exceptions under destination information.

Lost Luggage

Lost luggage on international flights is a common problem facing travellers today. We suggest that you pack

a small bag with your essentials, including any life sustaining medication, which can be carried with you as hand luggage. If travelling as a couple or family we suggest that you split your clothing between bags so that if one bag gets lost, you will have basic items on hand to see you through the first couple of days while we try and recover your lost baggage.

Please note that whilst we try our utmost to locate and re-unite you with your bags, that there may be charges involved in getting your bags to remote areas, which would be for your cost. Please remember to report the lost luggage to the airline as soon as you make the discovery - the airline will issue you with a Baggage Claim Form, which you will need in order for us to trace the bag.

Health and Dietary

Please note that you are travelling to a Malaria-risk area. Please consult your doctor for medical advice prior to travel.

Although usually safe to drink, we do not recommend that you drink the tap water. Filtered water is available at the camps and lodges.

The camps are isolated and generally have limited power supply and access to supplies. Please notify us in advance of any special dietary requirements, medical conditions and medical equipment you may need with you. Please carry critical medication in your hand luggage.

Yellow Fever Certificates - are only required if you have travelled to a Yellow Fever area as designated by the World Health Organisation. Please check with your Travel Clinic or doctor well in advance of your departure date.

General Travel Information

- There is no or limited electricity and cell phone coverage in the camps and lodges excluding major towns and cities. All camps do make provision for charging cameras and electronic devices.
- Please ensure that you do not pack any valuables, cameras, cash, laptops in your checked in luggage – these should be kept on your person at all times.
- Please notify us immediately of any changes to flight arrival and departure details as this affects onward transfer arrangements.
- Please note that most camps & lodges in Botswana do not have double beds. Twin beds are pushed together to make up a double room.
- Although every effort is made to adhere to schedules the company reserves the right and in fact is obliged to occasionally change routes and camps on safaris as dictated by changing conditions or unforeseen circumstances.
- By confirmation of the booking, you acknowledge that you have been made aware and accept that the tour carries inherent risks, and that you voluntarily assume all risks which are associated with the tour. You will be required to sign indemnities at the various camps, lodges and service providers, and abide by their operators code of conduct in order to ensure your safety.
- If you have any cause for complaint while travelling, you should immediately bring it to the attention of the camp manager and / or our Maun office that will attempt to resolve the situation immediately.
- Do not remove any animal artefacts, flora or fauna from any of the areas you visit, as there are strict international regulations on the export of such items.

Please refer to the **Safari Information** for further details on preparing for your safari.



Visa

Some visitors need to apply for visas before arrival please check with your Embassy.

For more information on visas please visit the following address:

Botswana Government - Visa Requirements

BORDER CROSSINGS

Currency

The currency of Botswana is the Pula (BWP). US\$ Dollar notes (2007 Series onwards), and Visa and MasterCard are accepted.

Internal Flights and Transfers

Due to the remote areas the camps and lodges are based in, transfers between camps may take place by boat, mekoro, game drive vehicle or light aircraft.

Flight times around Botswana | Approximate flying times

Flight duration times (as listed below), are to be used as an average guideline. They are based on actual flying time, and passengers may have various stops en-route to a destination affecting the total travel time. Your pilot will brief you of your flight route and duration during the safety briefing.

Maun - Delta:	15 to 30 minutes
Delta – Delta:	10 to 20 minutes
Delta - Linyanti:	30 to 40 minutes
Maun – Linyanti:	50 to 60 minutes
Linyanti - Kasane:	40 to 60 minutes
Maun/Delta - Kasane:	60 to 80 minutes
Maun - Makgadikgadi/Desert:	40 to 60 minutes

Departure Taxes

Departure taxes are included in ticket prices.

Weight & Luggage Restrictions

See Booking Information



Currency

From June 2019 the Zimbabwean Dollar (Z\$) was reinstated as the official currency of Zimbabwe. However, for tourism purposes, cash in US Dollars is generally the accepted currency. US\$ Dollar notes (2007 Series onwards), and Visa and MasterCard are accepted. Always have enough US\$ cash available in smaller denominations in the event where ATM's and Credit Card facilities are not operational.

Visa

Fees for Visitors to Zimbabwe who are eligible to receive their visa on entry

Europe and USA: US\$ 30.00 for single entry/ US\$ 45.00 for double entry.

UK & Ireland: US\$ 55.00 for single entry/ US\$ 70.00 for double entry.

Canada: US\$ 75.00 for single entry/ double entry to be obtained from local embassy prior to travel

Some visitors need to apply for visas before arrival - please check with your Embassy, Zimbabwe Government Visa Requirements. ALWAYS have cash available in the correct US\$ amount at ALL ports of entry.

Kaza Univisa – Zimbabwe and Zambia

Travellers planning to visit both Zimbabwe and Zambia should apply for a UniVisa (also known as KAZA visa). The visa can be obtained in advance, as well as at ports of entry, but cannot be guaranteed.

The UniVisa allows travellers 30 days travel within both Zambia and Zimbabwe, and is also valid for daytrips to Botswana. Travellers must remain within Zambia & Zimbabwe for the visa to stay valid. Visiting Botswana as a daytrip will not affect the visa's validity, provided travellers return to Zambia or Zimbabwe the same day.

Internal Flights and Transfers

Due to the remote areas the camps and lodges are based in, transfers between camps may take place by boat, train, game drive vehicle or light aircraft.

Departure Taxes

International departure taxes are included in the scheduled flight rates. However light aircraft transfers from Victoria Falls Airport to Livingstone or Kasane require an International Departure tax of US\$35 per person & AIDF Levy of US\$15 = US\$50 per person to be paid in cash.

Domestic departure taxes are payable in cash at the airport, for any flights departing internally from any registered, manned airport. These include Harare, Bulawayo, Kariba, Hwange and Victoria Falls Airport. The amount is US\$10 departure tax + US\$5 AIDF Levy = US\$15 per person. We recommend small denominations for easier and quicker transactions as change is not always available. Traveller's cheques and credit cards are NOT accepted.

Weight & Luggage Restrictions

See Booking Information